

- ADMIN OFFICES
- MEDIA CENTER
- CAFETERIA
- CLASSROOMS
- GYM
- STAGE
- KITCHEN
- MECHANICAL
- RESTROOMS
- ART
- MUSIC
- KINDERGARTEN
- SPECIAL ED.
- COMPUTER ROOM
- CORRIDOR

FIRST FLOOR: 37,041 SQ. FT.
 SECOND FLOOR: 22,829 SQ. FT.
 OVERALL: 59,870 SQ. FT.

1

ARCHITECTURAL PLAN - MAIN LEVEL

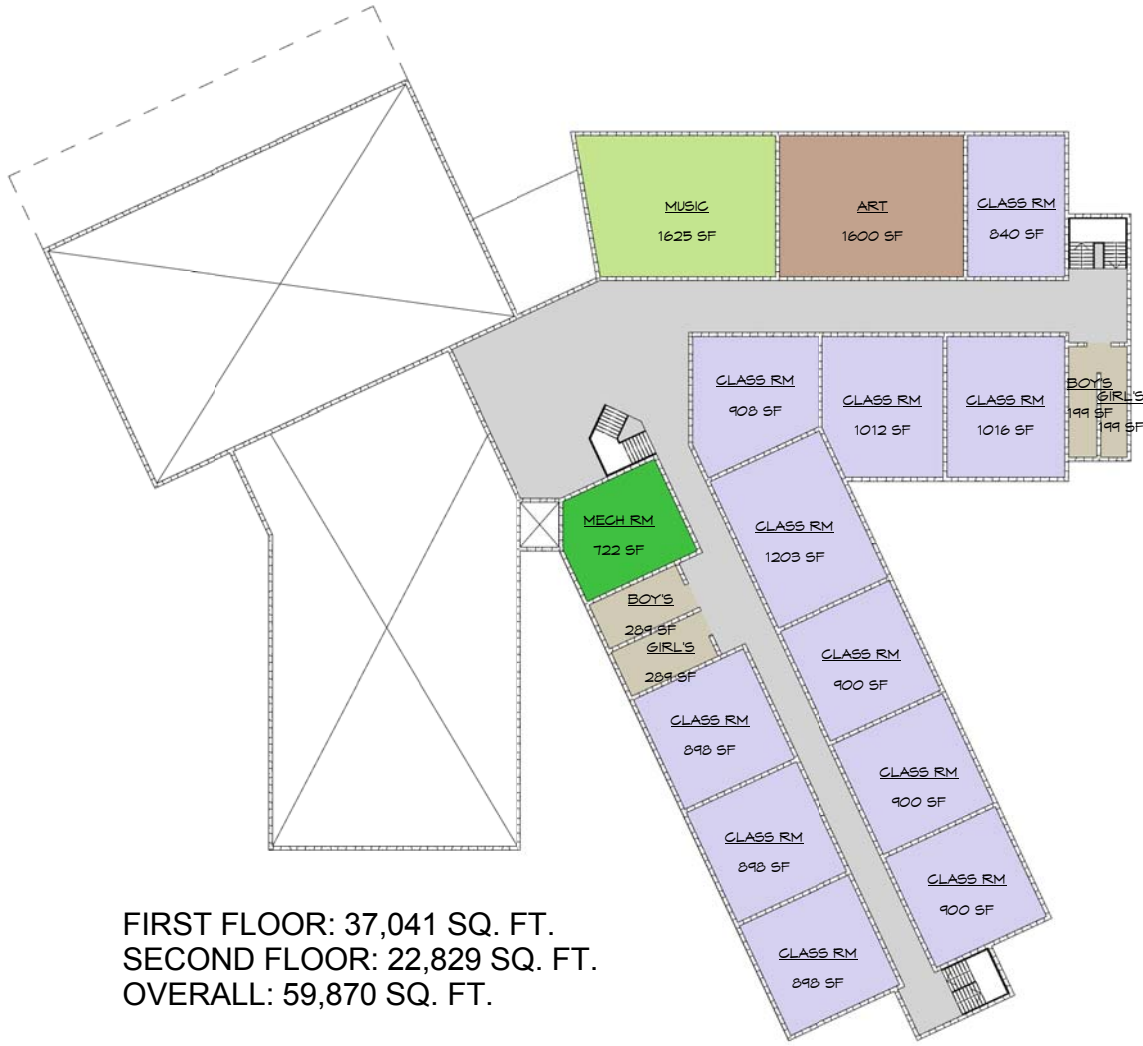
1" = 30'-0"



NEW 4-5 ELEMENTARY SCHOOL

DATE: 02/27/13
 HTK PROJECT NUMBER: XXXX.XX
 PAGE NUMBER:

P:\Admin - USD 435\2012 Masterplan\Drawings\Revit\SSMS Site w\NEW 4-5.rvt



FIRST FLOOR: 37,041 SQ. FT.
 SECOND FLOOR: 22,829 SQ. FT.
 OVERALL: 59,870 SQ. FT.

1

ARCHITECTURAL PLAN - SECOND LEVEL

1" = 30'-0"



- ADMIN OFFICES
- MEDIA CENTER
- CAFETERIA
- CLASSROOMS
- GYM
- STAGE
- KITCHEN
- MECHANICAL
- RESTROOMS
- ART
- MUSIC
- KINDERGARTEN
- SPECIAL ED.
- COMPUTER ROOM
- CORRIDOR